



APPLICANT

PETROLEX
OPERATING VENTURES, LLC

Green Lake Field

WEST BATON ROUGE PARISH, LOUISIANA

TUSCALOOSA ZONE **TUSC GL UDS SUA**

Docket No. 17-400
August 8, 2017

3-D SEISMIC EXHIBITS & TESTIMONY

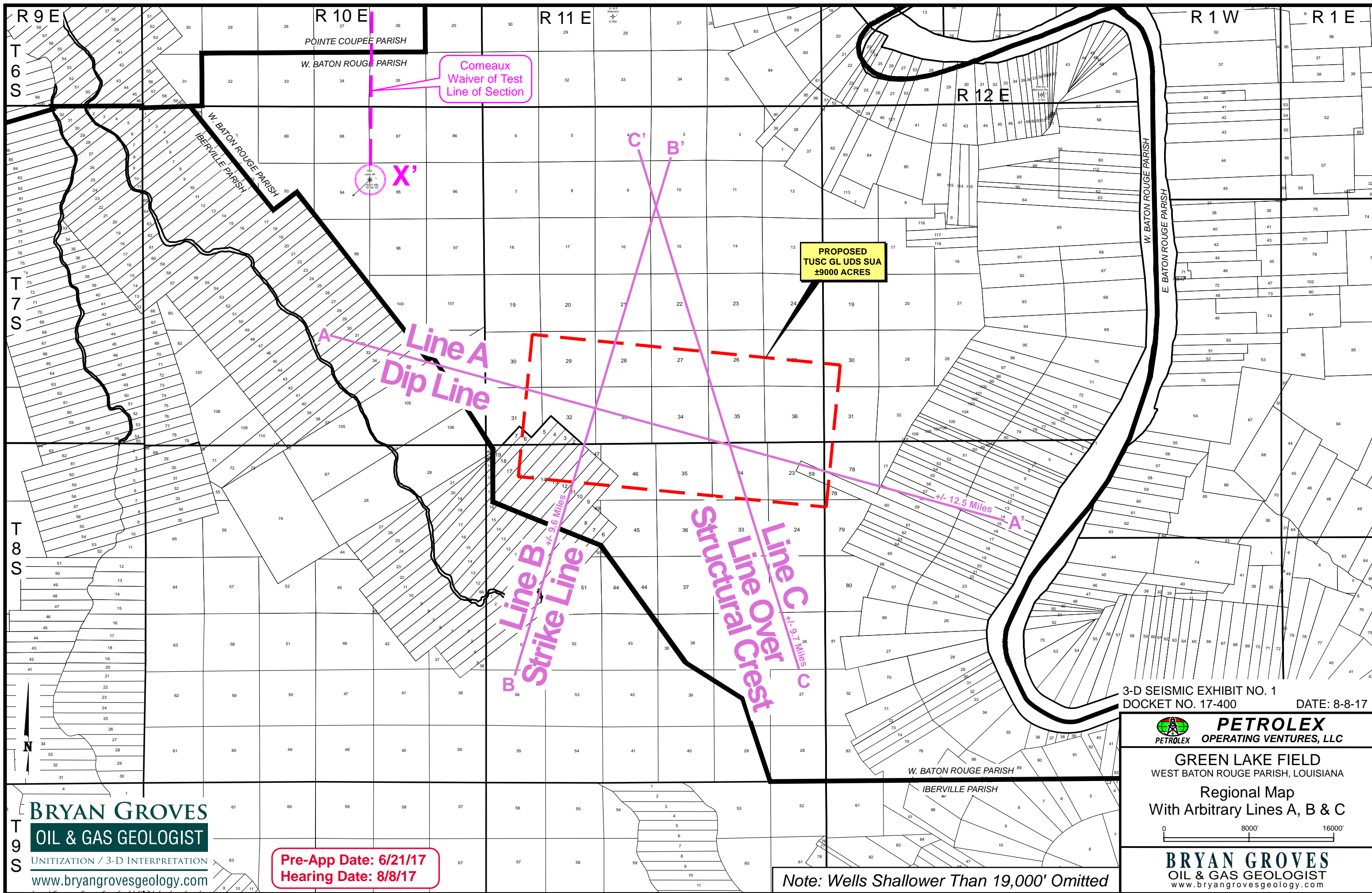
Witness: Bryan S. Groves

prepared by

BRYAN GROVES
OIL & GAS GEOLOGIST

UNITIZATION / 3-D INTERPRETATION

www.bryangrovesgeology.com

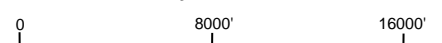


3-D SEISMIC EXHIBIT NO. 1
DOCKET NO. 17-400 DATE: 8-8-17

PETROLEX
OPERATING VENTURES, LLC

GREEN LAKE FIELD
WEST BATON ROUGE PARISH, LOUISIANA

Regional Map
With Arbitrary Lines A, B & C

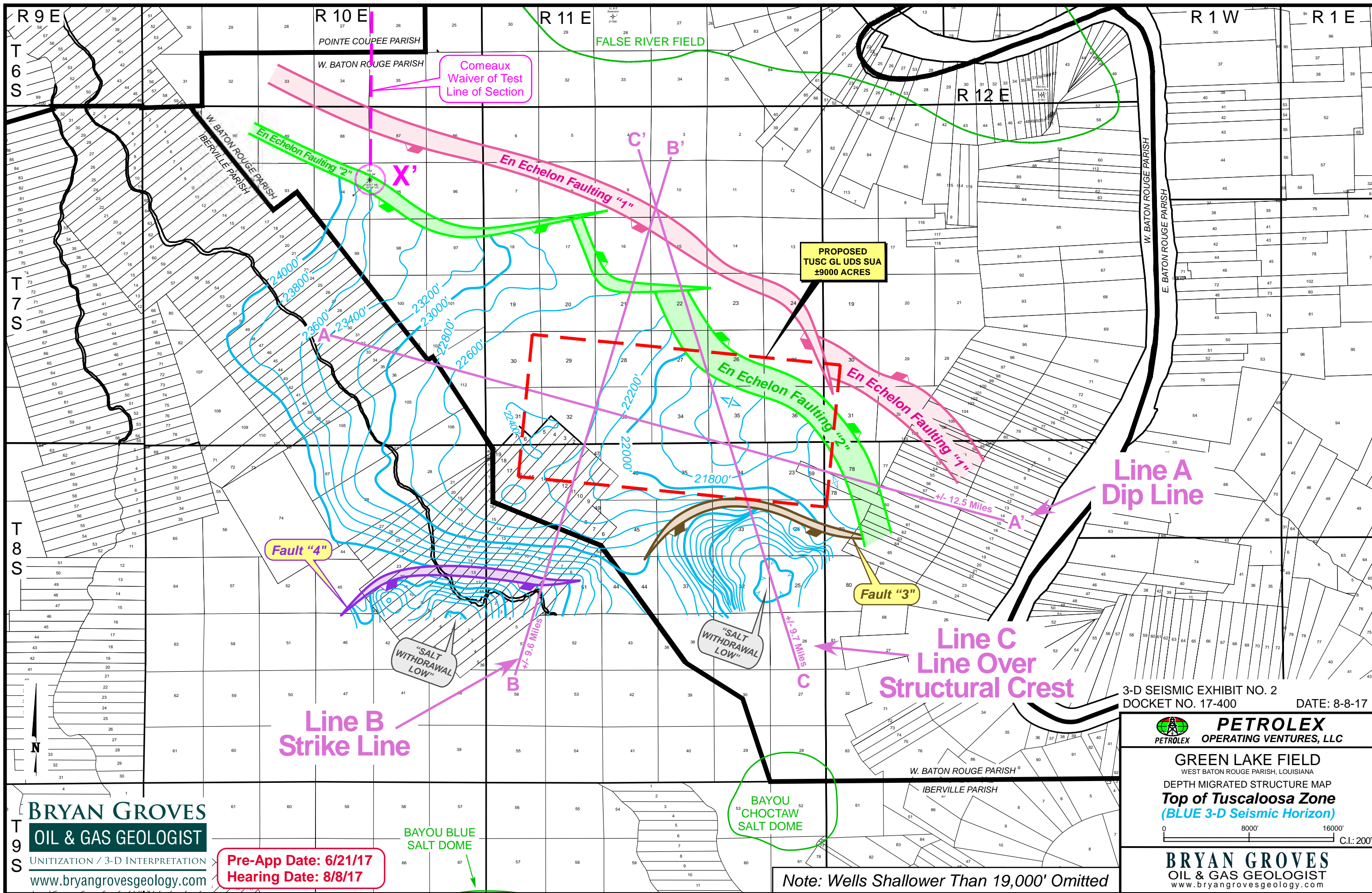


BRYAN GROVES
OIL & GAS GEOLOGIST
www.bryangrovesgeology.com

BRYAN GROVES
OIL & GAS GEOLOGIST
UNITIZATION / 3-D INTERPRETATION
www.bryangrovesgeology.com

Pre-App Date: 6/21/17
Hearing Date: 8/8/17

Note: Wells Shallower Than 19,000' Omitted



Comeaux
Waiver of Test
Line of Section

PROPOSED
TUSC GL UDS SUA
±9000 ACRES

Fault "4"

Fault "3"

Line A
Dip Line

Line B
Strike Line

Line C
Line Over
Structural Crest

"SALT
WITHDRAWAL
LOW"

"SALT
WITHDRAWAL
LOW"

3-D SEISMIC EXHIBIT NO. 2
DOCKET NO. 17-400 DATE: 8-8-17

PETROLEX
OPERATING VENTURES, LLC

GREEN LAKE FIELD
WEST BATON ROUGE PARISH, LOUISIANA
DEPTH MIGRATED STRUCTURE MAP
Top of Tuscaloosa Zone
(BLUE 3-D Seismic Horizon)

0 8000' 16000' C.I.: 200'

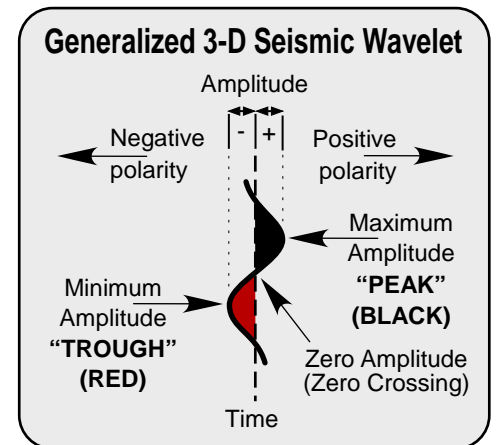
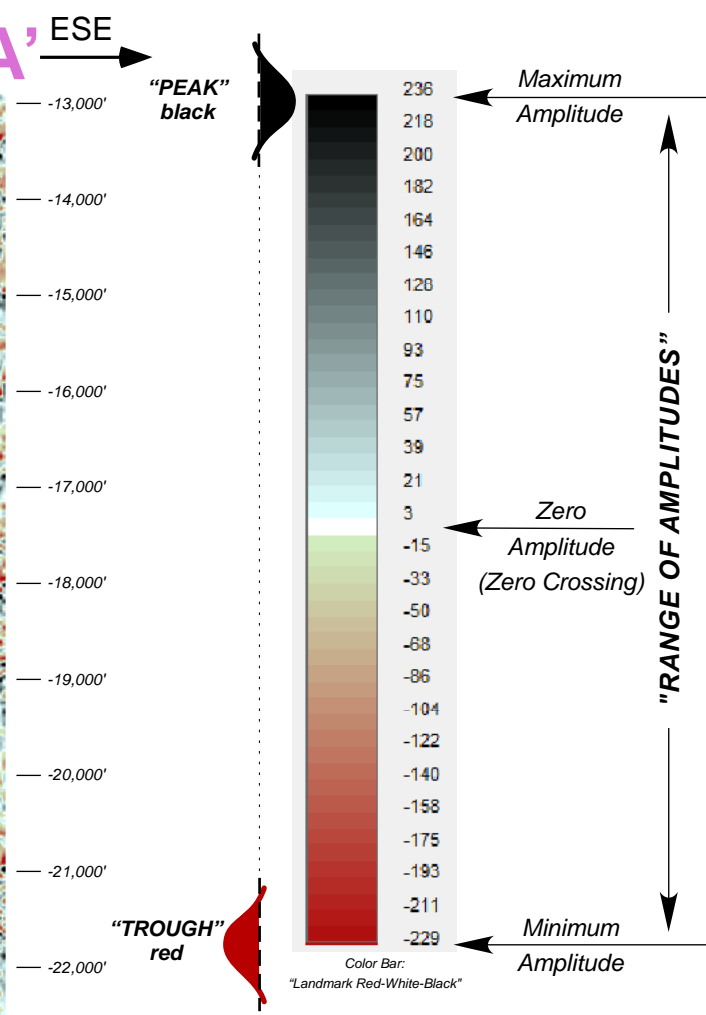
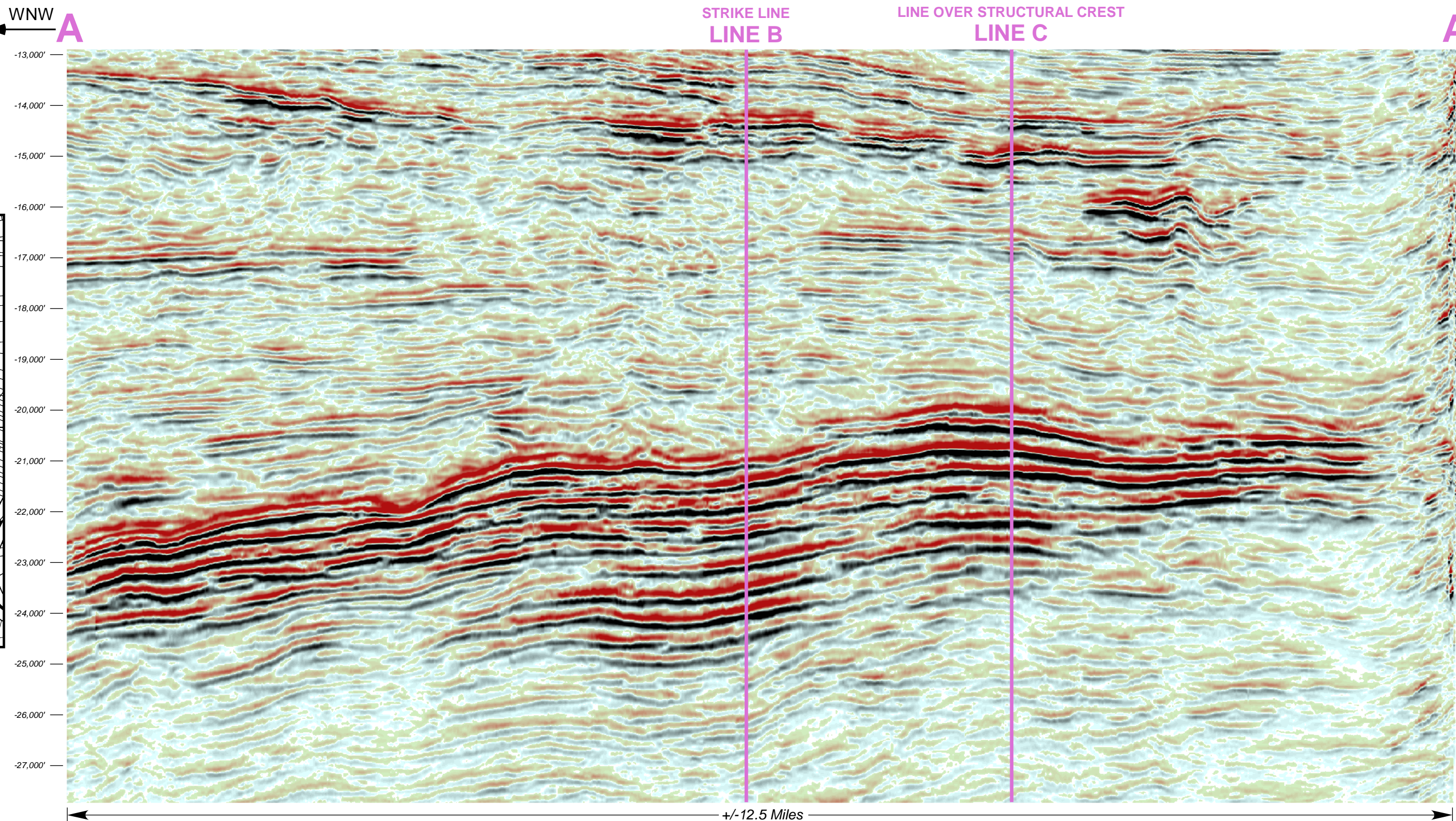
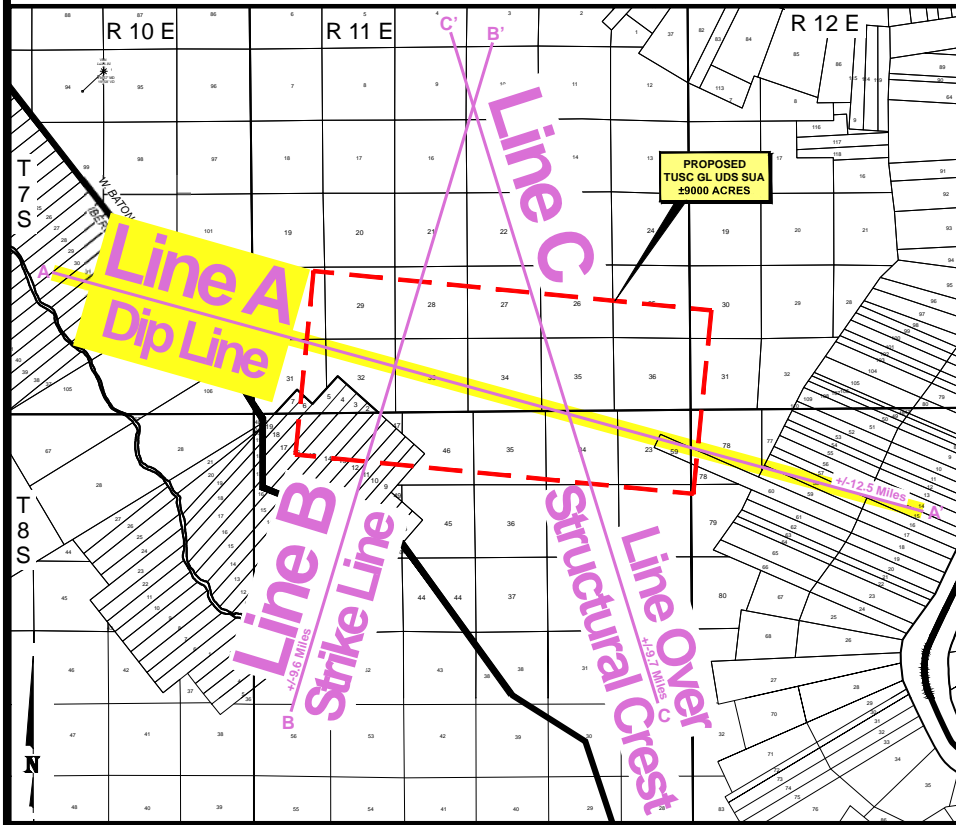
BRYAN GROVES
OIL & GAS GEOLOGIST
www.bryangrovesgeology.com

BRYAN GROVES
OIL & GAS GEOLOGIST
UNITIZATION / 3-D INTERPRETATION
www.bryangrovesgeology.com

Pre-App Date: 6/21/17
Hearing Date: 8/8/17

Note: Wells Shallower Than 19,000' Omitted

DIP LINE



Identical 3-D Seismic Data shown on 3-D Seismic Exhibit No. 4
Landmark Red-White-Black Display

BRYAN GROVES
OIL & GAS GEOLOGIST
UNITIZATION / 3-D INTERPRETATION
www.bryangrovesgeology.com

Pre-App Date: 6/21/17
Hearing Date: 8/8/17

"Seismic data owned or controlled by Seismic Exchange, Inc.; interpretation is that of Petrolex Operating Ventures, LLC"

3-D SEISMIC EXHIBIT NO. 3
DOCKET NO. 17-400 DATE: 8-8-17

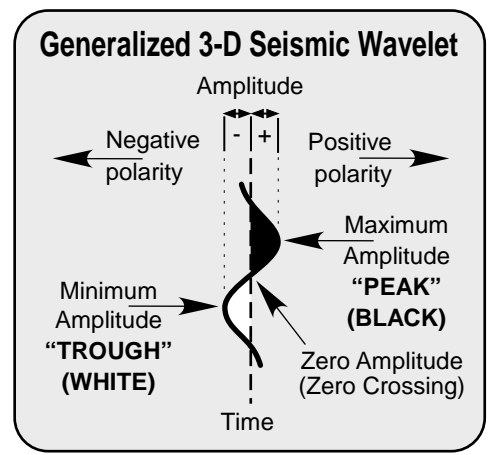
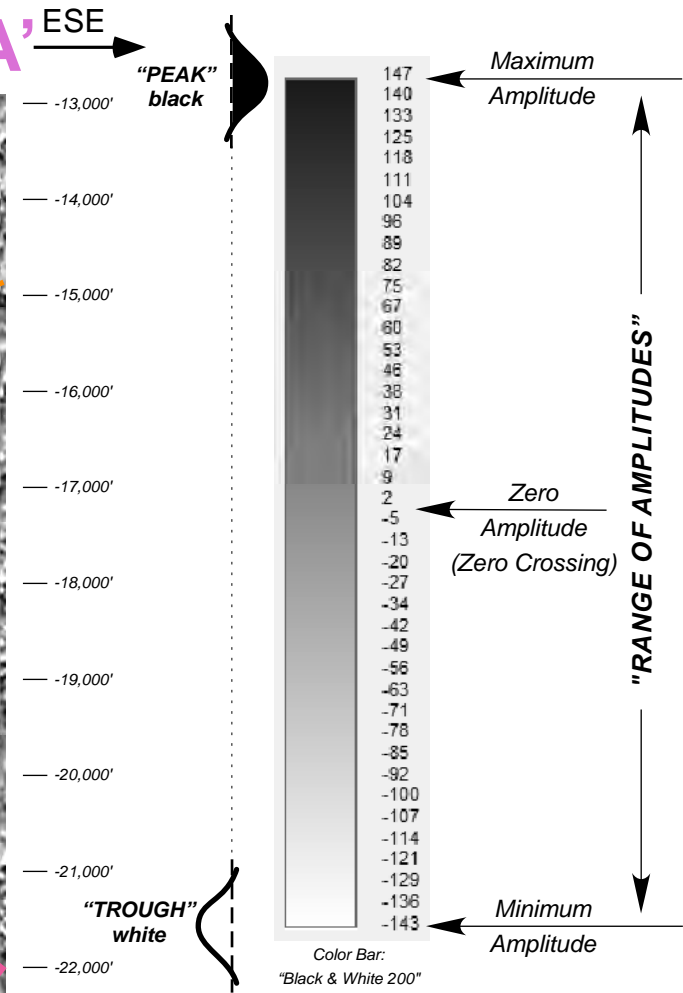
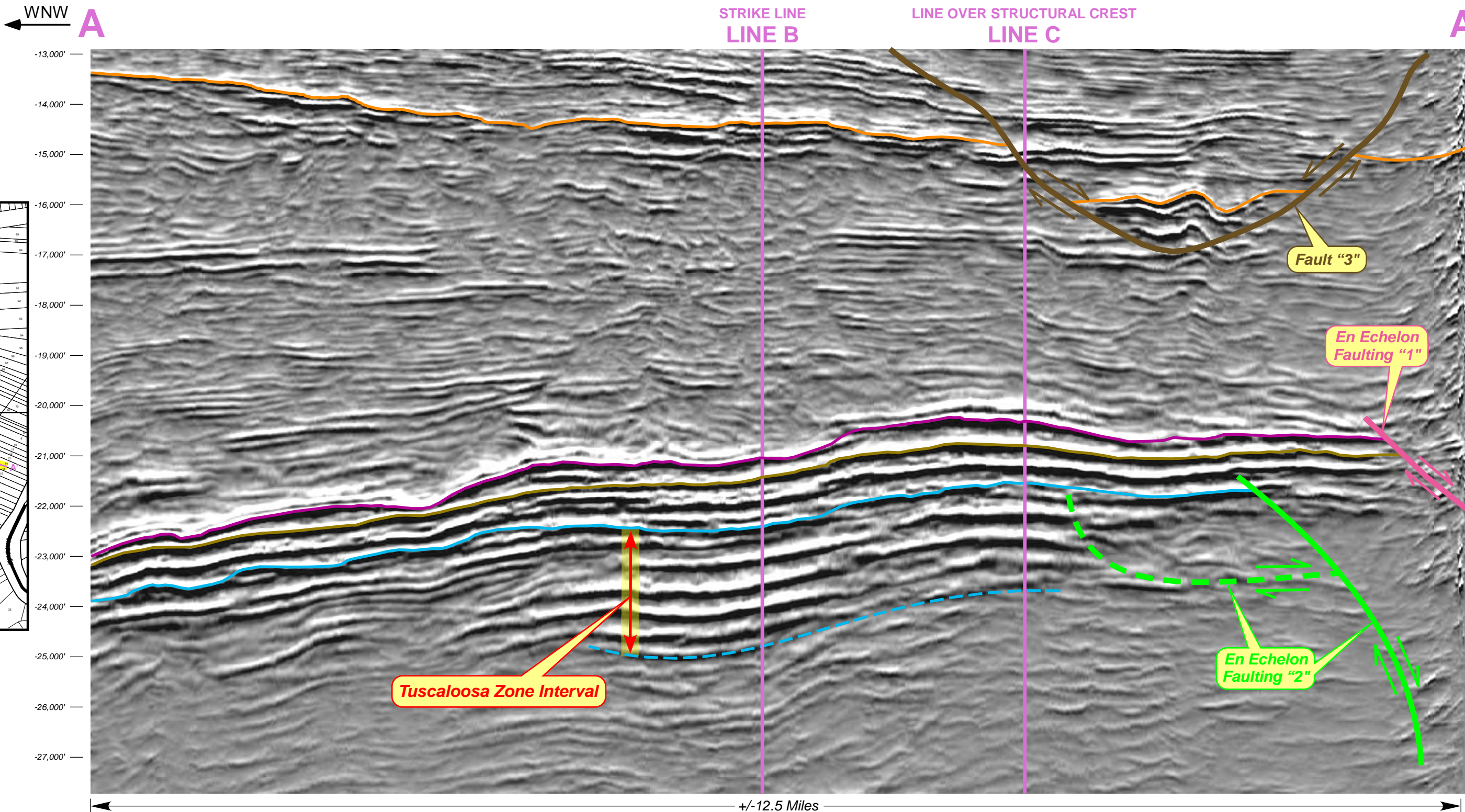
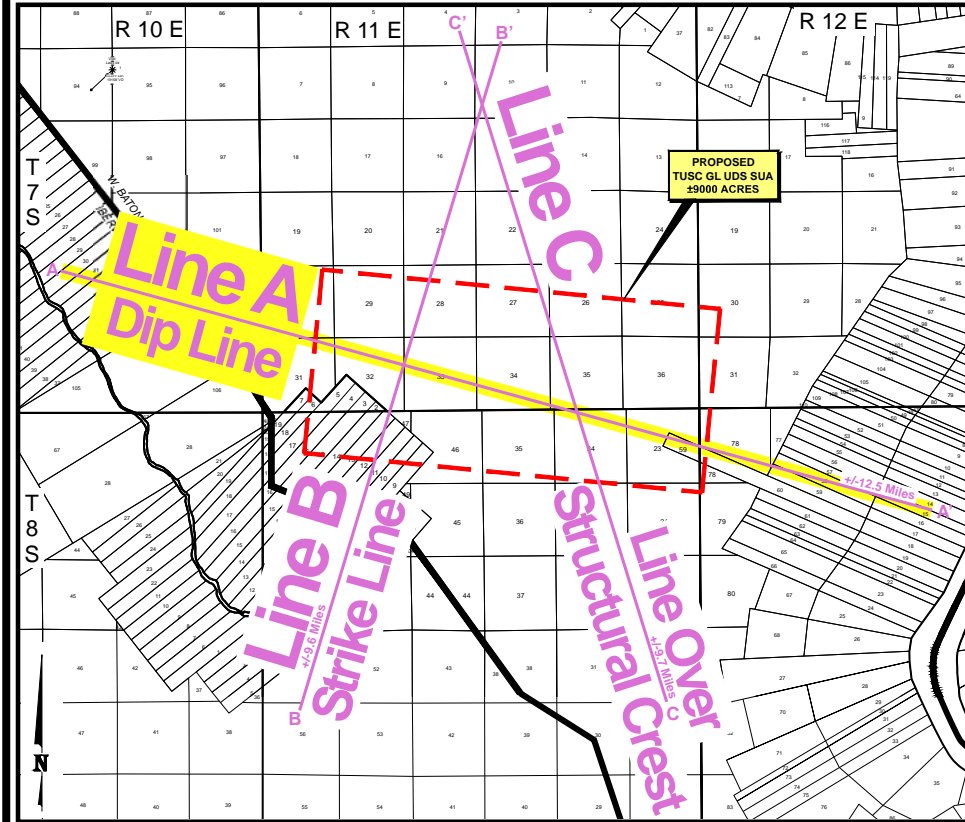
PETROLEX
OPERATING VENTURES, LLC

GREEN LAKE FIELD
WEST BATON ROUGE PARISH, LOUISIANA

Arbitrary Line A

BRYAN GROVES
OIL & GAS GEOLOGIST
www.bryangrovesgeology.com

DIP LINE



- | | |
|--|--------------------------------|
| En Echelon Faulting "1" (Composite Area) | Top Wilcox |
| En Echelon Faulting "2" (Composite Area) | Top Austin Chalk |
| Fault "3" | Base Austin Chalk |
| Fault "4" | Top Tuscaloosa Zone |
| | Estimated Base Tuscaloosa Zone |

Identical 3-D Seismic Data shown on 3-D Seismic Exhibit No. 3
Black & White 200 Display

"Seismic data owned or controlled by Seismic Exchange, Inc.; interpretation is that of Petrolex Operating Ventures, LLC"

3-D SEISMIC EXHIBIT NO. 4
 DOCKET NO. 17-400 DATE: 8-8-17

PETROLEX
 OPERATING VENTURES, LLC

GREEN LAKE FIELD
 WEST BATON ROUGE PARISH, LOUISIANA

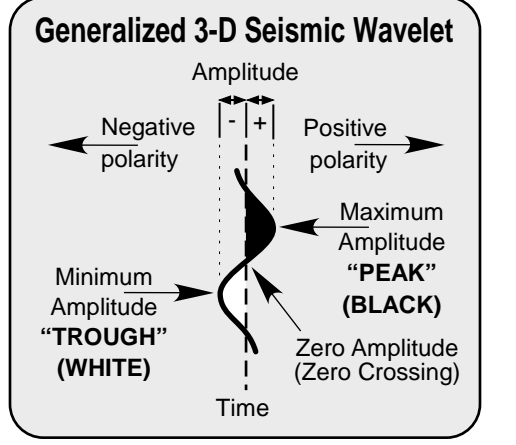
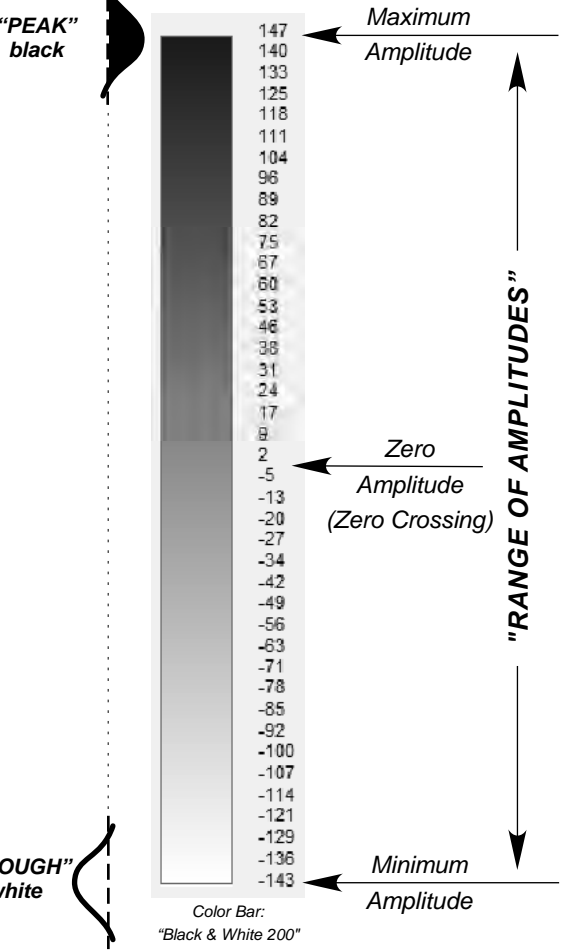
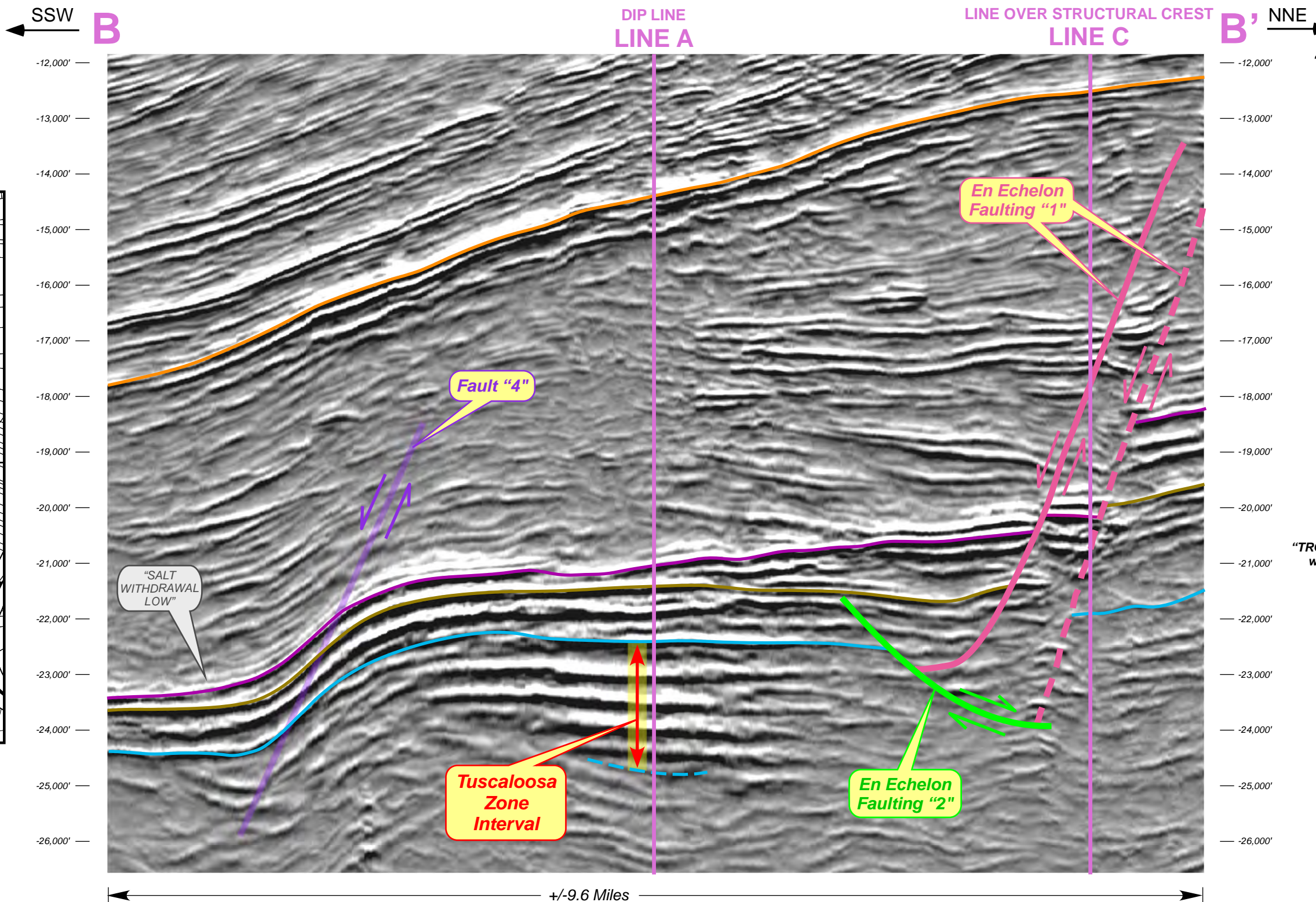
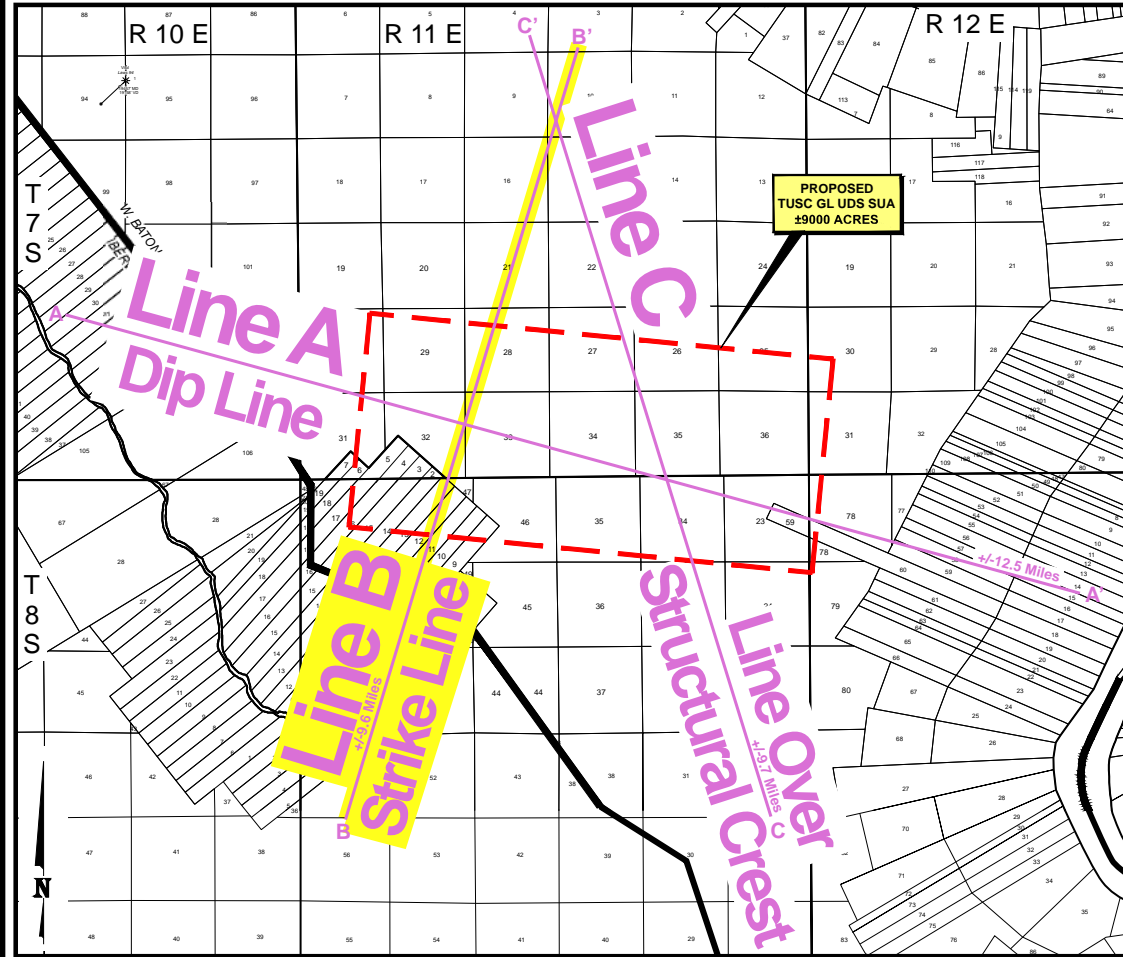
Arbitrary Line A

BRYAN GROVES
 OIL & GAS GEOLOGIST
 www.bryangrovesgeology.com

BRYAN GROVES
 OIL & GAS GEOLOGIST
 UNITIZATION / 3-D INTERPRETATION
 www.bryangrovesgeology.com

Pre-App Date: 6/21/17
 Hearing Date: 8/8/17

STRIKE LINE



- | | |
|--|--------------------------------|
| En Echelon Faulting "1" (Composite Area) | Top Wilcox |
| En Echelon Faulting "2" (Composite Area) | Top Austin Chalk |
| Fault "3" | Base Austin Chalk |
| Fault "4" | Top Tuscaloosa Zone |
| | Estimated Base Tuscaloosa Zone |

Black & White 200 Display

"Seismic data owned or controlled by Seismic Exchange, Inc.; interpretation is that of Petrolex Operating Ventures, LLC"

BRYAN GROVES
OIL & GAS GEOLOGIST
UNITIZATION / 3-D INTERPRETATION
www.bryangrovesgeology.com

Pre-App Date: 6/21/17
Hearing Date: 8/8/17

3-D SEISMIC EXHIBIT NO. 5
DOCKET NO. 17-400 DATE: 8-8-17

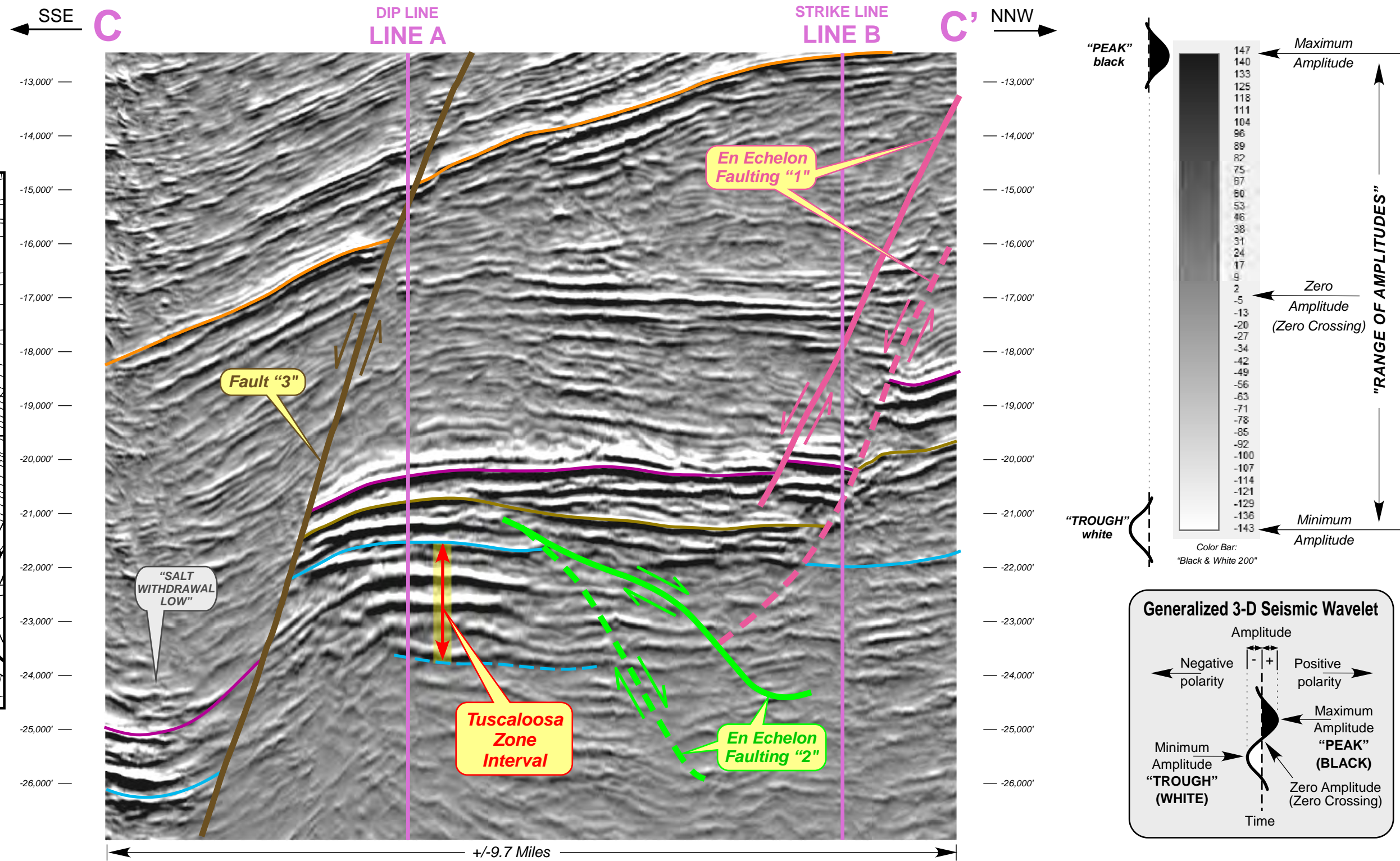
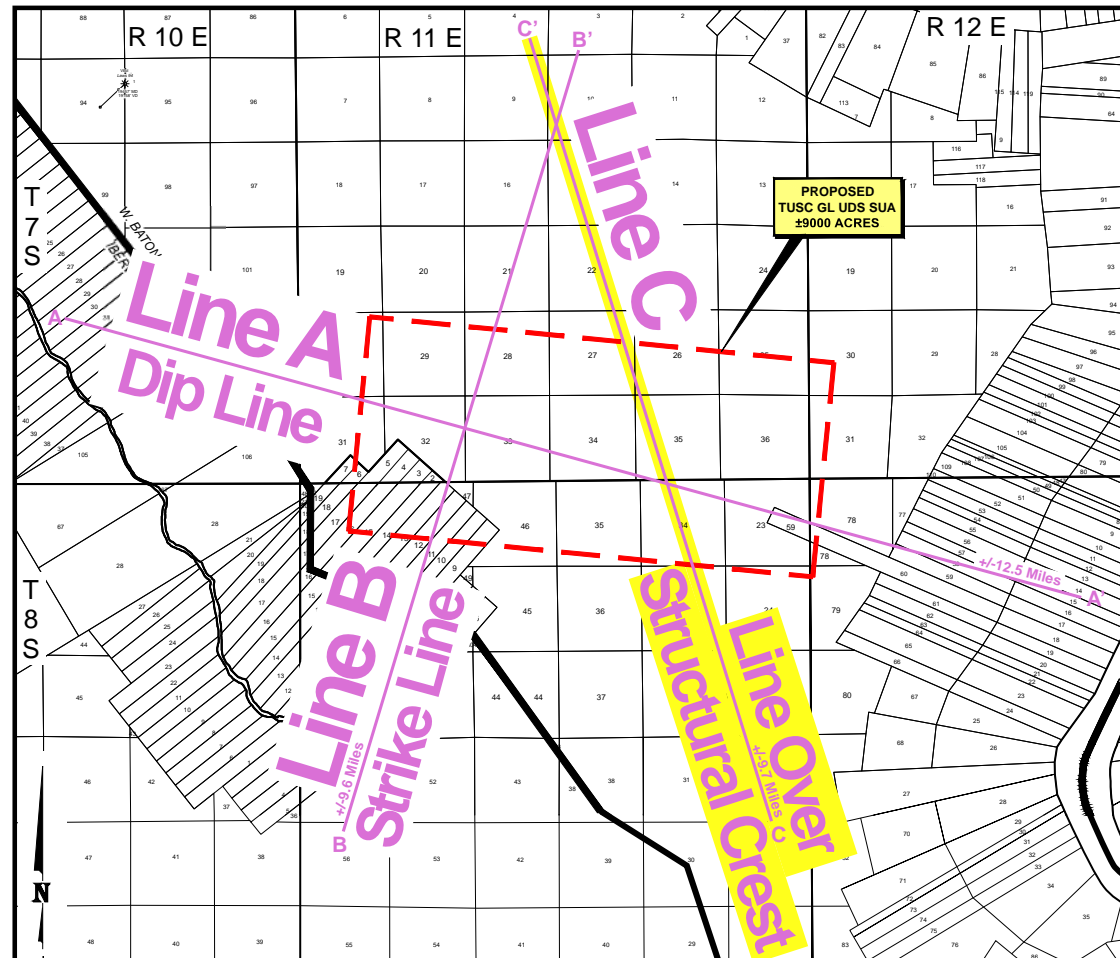
PETROLEX
OPERATING VENTURES, LLC

GREEN LAKE FIELD
WEST BATON ROUGE PARISH, LOUISIANA

Arbitrary Line B

BRYAN GROVES
OIL & GAS GEOLOGIST
www.bryangrovesgeology.com

LINE OVER STRUCTURAL CREST



- | | |
|--|--------------------------------|
| En Echelon Faulting "1" (Composite Area) | Top Wilcox |
| En Echelon Faulting "2" (Composite Area) | Top Austin Chalk |
| Fault "3" | Base Austin Chalk |
| Fault "4" | Top Tuscaloosa Zone |
| | Estimated Base Tuscaloosa Zone |

BRYAN GROVES
OIL & GAS GEOLOGIST
UNITIZATION / 3-D INTERPRETATION
www.bryangrovesgeology.com

Pre-App Date: 6/21/17
Hearing Date: 8/8/17

Black & White 200 Display

"Seismic data owned or controlled by Seismic Exchange, Inc.; interpretation is that of Petrolex Operating Ventures, LLC"

3-D SEISMIC EXHIBIT NO. 6
DOCKET NO. 17-400 DATE: 8-8-17

PETROLEX
OPERATING VENTURES, LLC

GREEN LAKE FIELD
WEST BATON ROUGE PARISH, LOUISIANA

Arbitrary Line C

BRYAN GROVES
OIL & GAS GEOLOGIST
www.bryangrovesgeology.com